



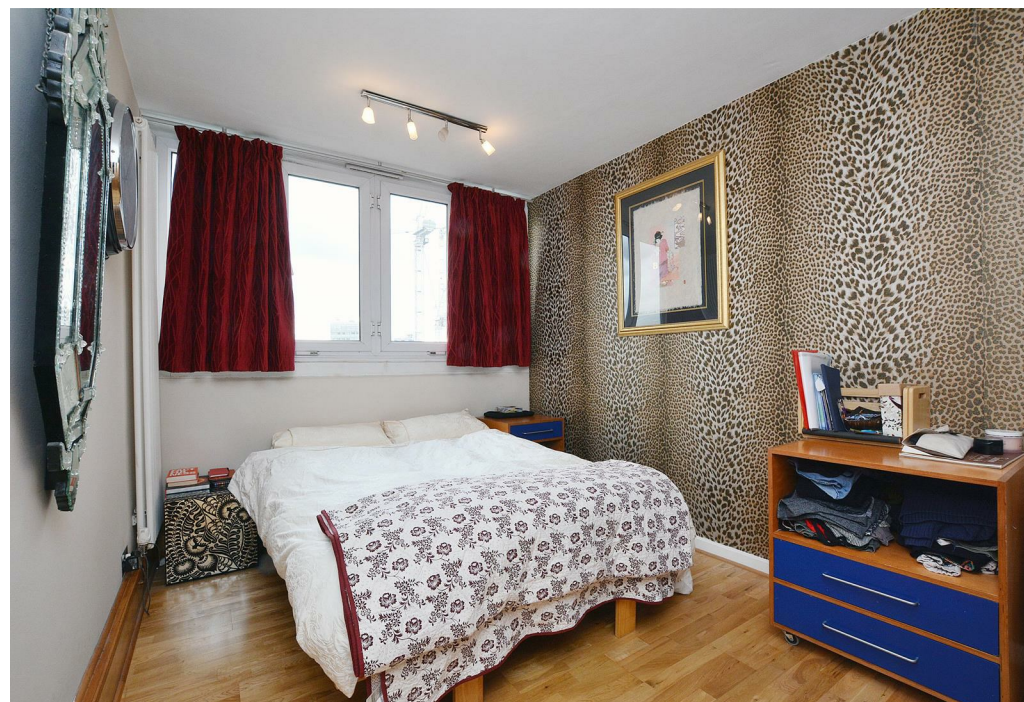
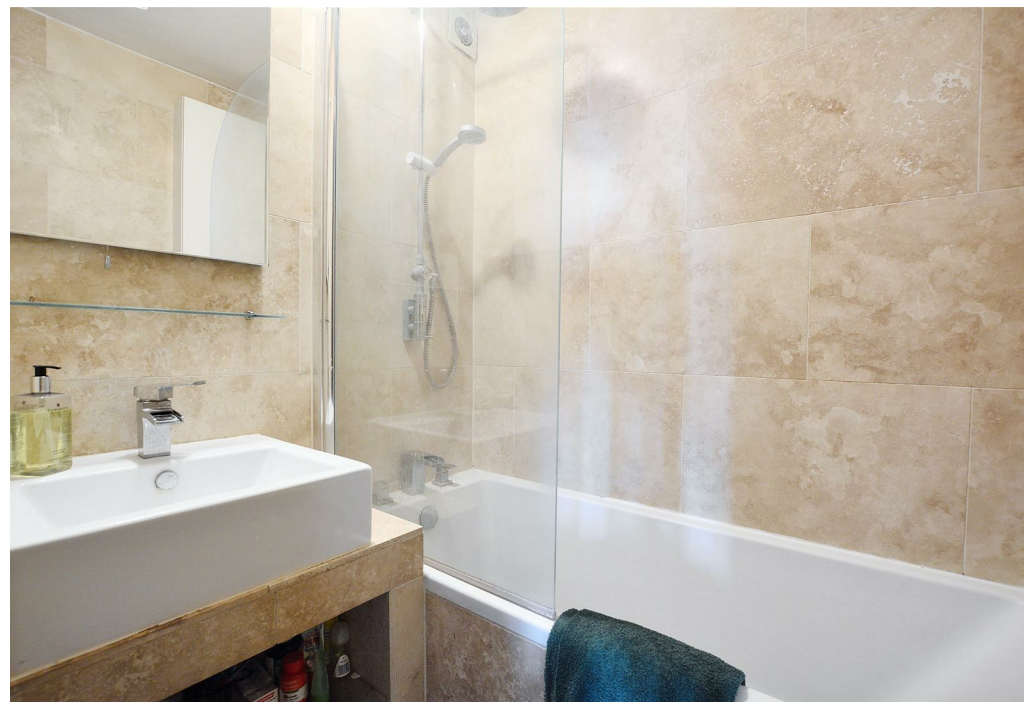
Hall Place, W2 1LP
Asking Price £599,000 Leasehold





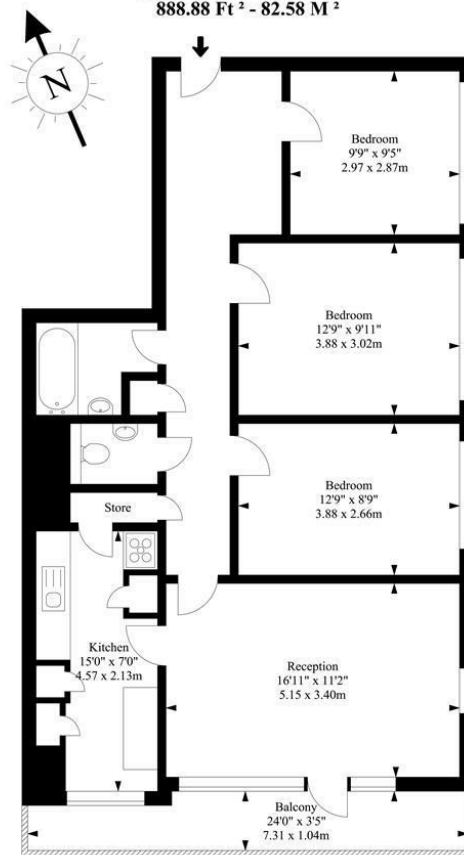
3 x  1 x  1 x 

A three bedroom 10th floor apartment with a balcony that has a spectacular views over central London. The 888 sq ft. flat is situated in a purpose built block and would make a wonderful rental investment or home. The accommodation comprises two good sized double bedrooms, and one small double, a great reception with balcony running the length of it, great for entertaining, a separate kitchen, family bathroom, and guest WC. Benefits include a lift, store room and wooden floors throughout. There is a porter and off street secure parking by arrangement. The Edgware road has shops and bars close by, as well as the tube, and the picturesque canals of Little Venice is a stones throw away.



Braithwaite Tower, Hall Place

Approx. Gross Internal Area
888.88 Ft² - 82.58 M²



Tenth Floor

Illustration For Identification Purposes Only. Not To Scale

Important Notice Debussy Property Service Ltd trading as Braithwait for themselves and for the vendor of this property whose agents they are, give notice that (i) these particulars do not constitute any part of an offer or contract, (ii) all statements contained within these particulars are made without responsibility on the part of Braithwait or the vendor, (iii) whilst none in good faith, none of the statements contained within these particulars are to be relied upon as a statement of representation or fact, (iv) any intending purchaser must satisfy him/herself by inspection or otherwise as to the correctness of each of the statements contained within these particulars, (v) the vendor does not make or give either Braithwait or any person within their employment any authority to make or give any representation or warranty whatsoever in relation to this property. Wide angled lenses may be used in photographs.

Call us on 0207 289 8889 or email sales@braithwait.co.uk

